

A17051-S Series 170X151X51mm(6.7"X6"X2")

[View WebPage](#)
[View 3D Object](#)



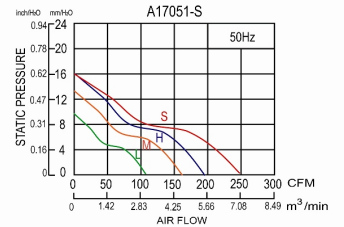
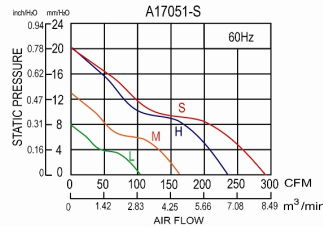
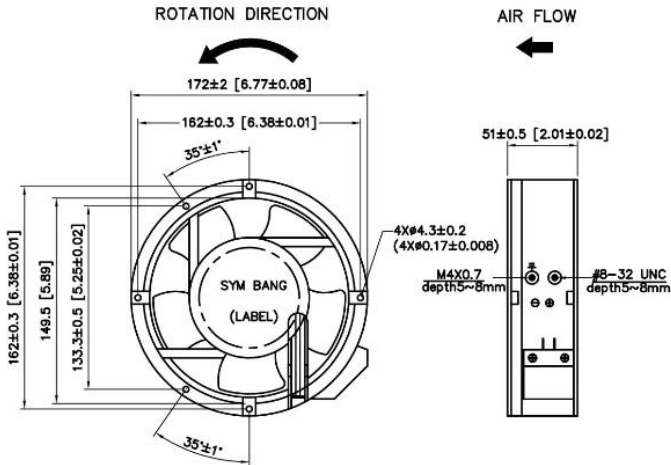
HOUSING	Die-Cast Aluminum, Painted Black
IMPELLER	Thermoplastic PBT, UL94V-0
BEARING	Ball
TERMINATION	2 Lead Wires or Terminal for AC power supply, 3 Lead Wires for Signal-Rotation
OPERATING VOLTAGE RANGE	90 VAC to 120 VAC for 110V Type
DIELECTRIC STRENGTH	1,500VAC for 1 Minute
INSULATION	Class A
INSULATION RESISTANCE	100,000 Ohms min. @500 VDC
OPERATING TEMPERATURE	-10°C To +70°C
SAFETY	Thermally Protected(Auto Restart)
ROHS COMPLIANCE	YES
ADDITIONAL FUNCTION	RD H SPEED ,60Hz ONLY

SPECIFICATION

MODEL NO.	RATED VOLTAGE (V)	FREQUENCY (Hz)	RATED CURRENT (A)	INPUT POWER (W)	SPEED RPM	MAX. AIR PRESSURE		AIR FLOW		NOISE dB(A) @1M
						InchH ₂ O	mmH ₂ O	m ³ /min	CFM	
A17051V1H-S	115	50/60	0.23/0.25	26.7/29.7	2800/3200	0.63/0.79	16/20	5.4/6.6	190/235	50
A17051V1M-S	115	50/60	0.15/0.19	16.1/21.0	2550/2400	0.51/0.55	13/14	4.7/4.8	165/170	40
A17051V1L-S	115	50/60	0.18/0.15	19.8/18.2	1450/1750	0.40/0.31	10/8	3.1/3.0	110/106	32
A17051V2H-S	230	50/60	0.11/0.13	26.7/31.2	2800/3200	0.63/0.79	16/20	5.4/6.6	190/235	50
A17051V2M-S	230	50/60	0.09/0.11	17.9/22.8	2550/2300	0.51/0.55	13/14	4.7/4.8	165/170	40
A17051V2L-S	230	50/60	0.08/0.07	17.9/17.1	1450/1750	0.40/0.31	10/8	3.1/3.0	110/106	32

DIMENSION

AIR PERFORMANCE



Mounting panel Cutout
 Outlet side & Inlet Side

