

A8038 Series 80X80X38mm(3.15"X3.15"X1.5")
[View WebPage](#)
[View 3D Object](#)

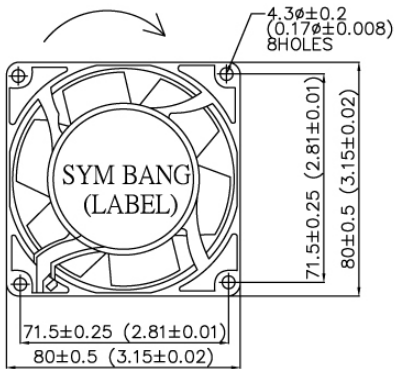

HOUSING	Die-Cast Aluminum, Painted Black
IMPELLER	Thermoplastic PBT, UL94V-0
BEARING	Ball or Sleeve
TERMINATION	Terminals or Lead Wire
OPERATING VOLTAGE RANGE	85 VAC to 125 VAC for 120V Type 185 VAC to 245 VAC for 230 V Type
DIELECTRIC STRENGTH	1,500 VAC for 1 minute
INSULATION	Class B
INSULATION RESISTANCE	100,000 Ohms min. @ 500 VDC
OPERATING TEMPERATURE	-10 °C to +70 °C for Sleeve Type -20 °C to +80 °C for Ball Type
SAFETY	Impedance Protected
WEIGHT	323g
ROHS COMPLIANCE	Yes

SPECIFICATION

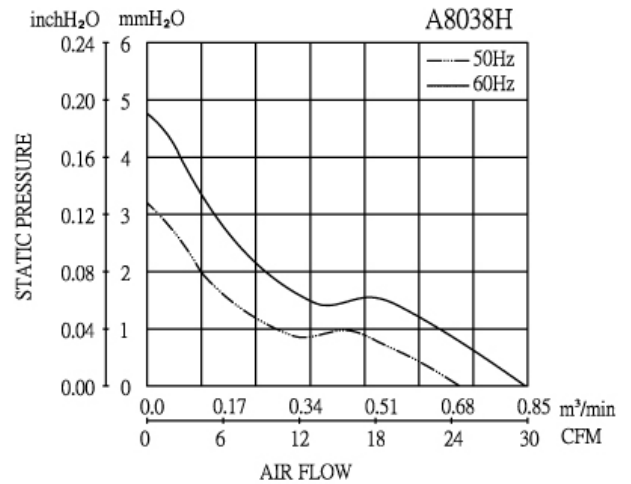
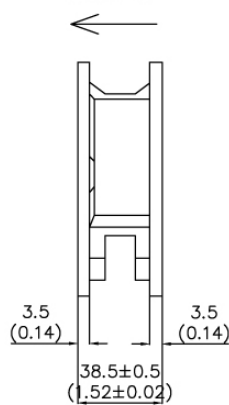
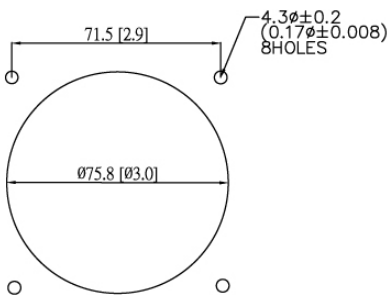
MODEL NO.	RATED VOLTAGE (V)	FREQUENCY (Hz)	RATED CURRENT (A)	INPUT POWER (W)	SPEED RPM	MAX. AIR PRESSURE		AIR FLOW		NOISE dB(A) @1M
						InchH ₂ O	mmH ₂ O	m ³ /min	CFM	
A8038V1H	115	50/60	0.15/0.12	11/9	2680/3150	0.13/0.19	3.30/4.83	0.75/0.90	26/31	35/39
A8038V2H	230	50/60	0.08/0.06	11/9	2680/3150	0.13/0.19	3.30/4.83	0.75/0.90	26/31	35/39

DIMENSION
AIR PERFORMANCE

ROTATION DIRECTION



AIR FLOW


 Mountion Panel Cutout
 Outlet Side & Inlet Side


UNIT:mm(inch)