

## A8038M Series 80X80X38mm(3.15"X3.15"X1.5")

[View WebPage](#)  
[View 3D Object](#)



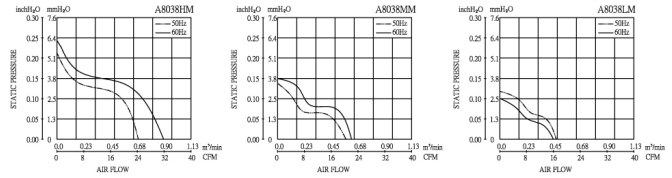
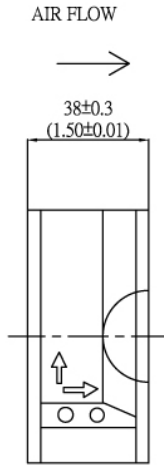
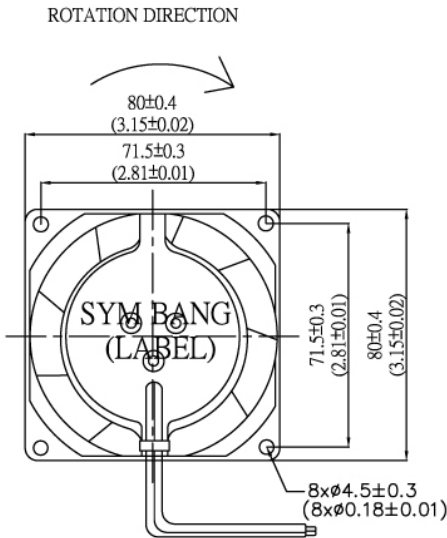
<b>HOUSING</b>	All Metal Die-Cast Aluminum, Painted Black
<b>IMPELLER</b>	Metal
<b>BEARING</b>	Ball or Sleeve
<b>TERMINATION</b>	Lead Wire
<b>DIELECTRIC STRENGTH</b>	1,500 VAC for 1 minute
<b>INSULATION</b>	Class B
<b>INSULATION RESISTANCE</b>	100,000 Ohms min. @ 500 VDC
<b>OPERATING TEMPERATURE</b>	-10 °C to + 70 °C for Sleeve Type -20 °C to + 80 °C for Ball Type
<b>SAFETY</b>	Impedance Protected
<b>WEIGHT</b>	420g
<b>ROHS COMPLIANCE</b>	Yes

### SPECIFICATION

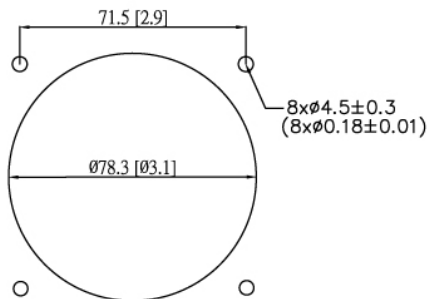
MODEL NO.	RATED VOLTAGE (V)	FREQUENCY (Hz)	RATED CURRENT (A)	INPUT POWER (W)	SPEED RPM	MAX. AIR PRESSURE		AIR FLOW		NOISE dB(A) @1M
						InchH <sub>2</sub> O	mmH <sub>2</sub> O	m <sup>3</sup> /min	CFM	
A8038V1HM	115	50/60	0.14/0.12	13/12	2300/2700	0.17/0.24	4.32/6.09	0.74/0.88	26/30	30/35
A8038V1MM	115	50/60	0.12/0.10	10/9	2000/2300	0.14/0.15	3.56/3.81	0.60/0.65	21/23	24/27
A8038V1LM	115	50/60	0.08/0.06	6/5	1700/1900	0.12/0.10	3.05/2.54	0.50/0.47	17/16	21/23
A8038V2HM	230	50/60	0.10/0.08	13/12	2300/2700	0.17/0.24	4.32/6.09	0.74/0.88	26/30	30/35
A8038V2MM	230	50/60	0.08/0.06	10/9	2000/2300	0.14/0.15	3.56/3.81	0.60/0.65	21/23	24/27
A8038V2LM	230	50/60	0.05/0.04	6/5	1700/1900	0.12/0.10	3.05/2.54	0.50/0.47	17/16	21/23

### DIMENSION

### AIR PERFORMANCE



### Mountion Panel Cutout Outlet Side & Inlet Side



UNIT:mm(inch)